

Medium Duty High Volume Bucket

Some common uses: *Feed, Snow, Digging Out Bag Silage*

Part # MDHV-(width) Example: MDHV-60 is a 60" Medium Duty High Volume Bucket



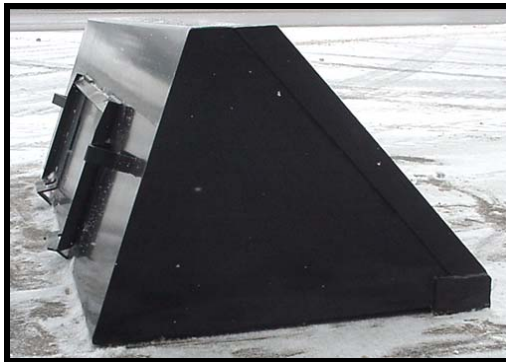
← 3/4" X 6" Cutting Edge Sides for Reinforced Corners.

MDHV-Series

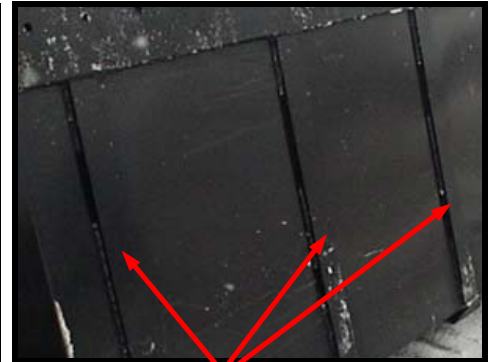
Berlon's *Medium Duty High Volume Buckets* are a heavier version of our SLMB series. They are available in widths of 60", 66", 72", 78", 84", 96" and 102" to suit your application.



Heavy Duty Steps



High Capacity Sides



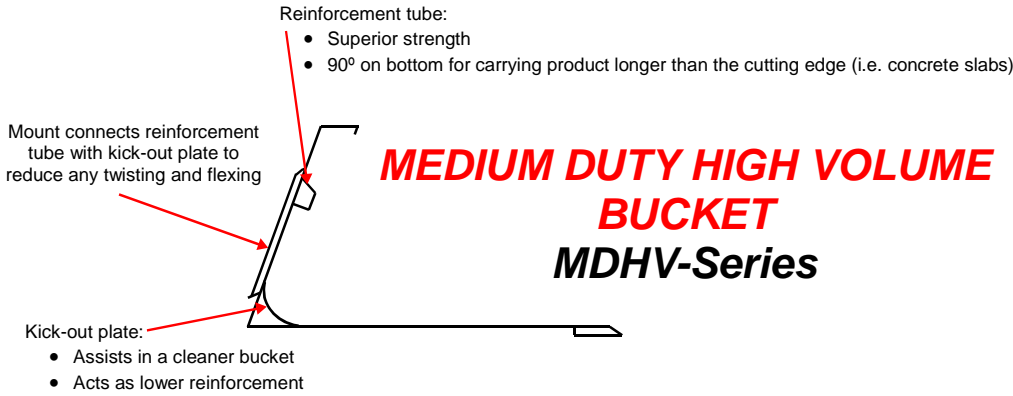
Wear Bars

Berlon's *Medium Duty High Volume Buckets* feature a fully welded body, reinforcement tube for strength, 2 heavy duty steps, and a 3/4" x 6" cutting edge. The MDHV-Series also feature side cutting edges, a radius kick-out plate for easy clean out and wear bars. This high capacity bucket comes powder painted black and is standard with a MPUF-1 mounting plate. All of these features show that ***Berlon builds buckets the way the should be built!***

Suggested List Price Pg 926-927



Why a Berlon?



MEDIUM DUTY HIGH VOLUME BUCKET MDHV-Series



14 MAIN REASONS:

- 8 different options to add to Berlon Buckets, making operators more efficient
- Different mounts to fit your skidloader
- 3/4" x 6" cutting edge with holes
- 3/4" edge wrapped 3" around the side of bucket, reinforcing corners
- 1/2" x 3" wear bars
- Radius kick-out plate inside back of bucket providing easy clean out
- Radius kick-out plate provides ultimate strength at bottom of mount
- Reinforcement tube assists in holding larger products from tipping out
- Reinforcement tube in line with top of mount
- Back of bucket has sharp edge for back dragging
- 3/8" x 3" material for side cutting edges
- Heavy duty steps
- Powder coat paint provides durable & professional finish
- No open crevices-welded 100% to keep moisture out

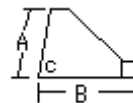
OPTIONS:

Pg 928

May not be available on all sizes.

- Bag Buster
- Bolt On Cutting Edge
- Bolt On Tooth Bar
- Bolt On Tooth Bar Over Edge
- Bolt On Serrated Edge
- Rake Tooth Edge
- Light Duty Weld on Teeth
- Heavy Duty Weld on Teeth

Bucket Data



Part #	I.D. Width	O.D. Width	Back Height A	Depth B	Back Angle C	Weight	Heaped Capacity	Dimple Plate	1/2" x 3" Bars	Steps	Cutting Edge	Holes in Edge
MDHV-60	60"	61.5"	29"	39"	70°	510.0	26.05 Cubic Ft	No	3	2	3/4" x 6"	Yes
MDHV-66	66"	67.5"	29"	39"	70°	553.0	28.67 Cubic Ft	No	3	2	3/4" x 6"	Yes
MDHV-72	72"	73.5"	29"	39"	70°	572.5	31.27 Cubic Ft	No	3	2	3/4" x 6"	Yes
MDHV-78	78"	79.5"	29"	39"	70°	606.5	33.88 Cubic Ft	No	3	2	3/4" x 6"	Yes
MDHV-84	84"	85.5"	29"	39"	70°	637.0	36.48 Cubic Ft	No	3	2	3/4" x 6"	Yes
MDHV-96	96"	97.5"	29"	39"	70°	738.0	41.70 Cubic Ft	No	4	2	3/4" x 6"	Yes
MDHV-102	102"	103.5"	29"	39"	70°	784.0	44.31 Cubic Ft	No	4	2	3/4" x 6"	Yes