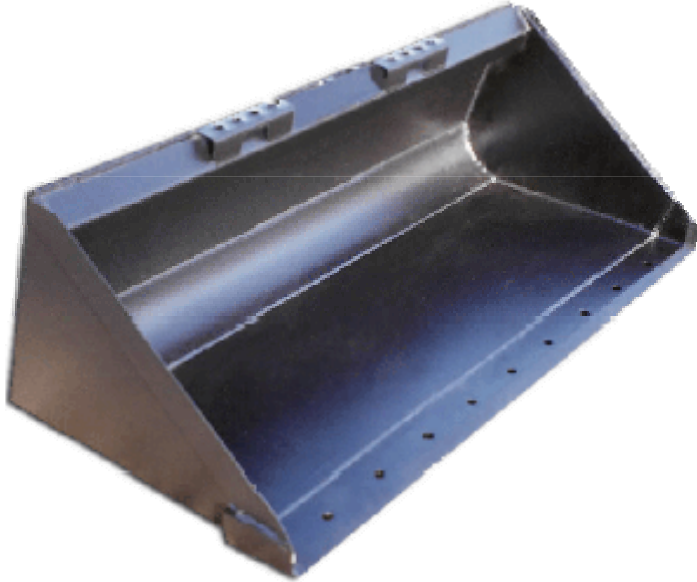


# Low Profile Bucket

Some common uses: *Excavating, Landscaping, Construction, General Purpose*

Part # B-(width) Example: B-60 is a 60" Low Profile Bucket

Recommended for Bobcat skidloaders

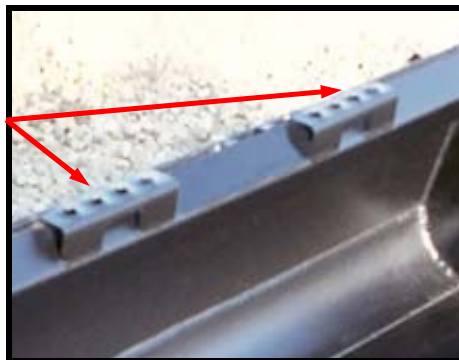


## B-Series

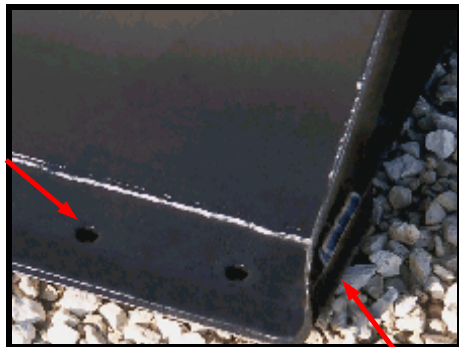
Berlon's **Low Profile Buckets** have set new standards with structured design features that deliver superior strength, durability and performance. The 7 GA steel dimple plate on each **Low Profile Bucket** (except 54") provides for longer wear, greater strength and overall rigidity. Each bucket comes standard with a MPUF-1 mounting plate and powder painted black.

## Dimple Plate

Every Berlon B-Series bucket comes with 2 heavy duty steps for easy entry and exiting from your skidloader.



B-Series buckets feature a 3/4" x 6" cutting edge with holes punched 6" on center.



3/4" X 6" Cutting Edge Sides for Reinforced Corners



The innovative B-Series **Low Profile Buckets** also feature a radius kick-out plate and sharp edge for back dragging. Berlon **Low Profile Buckets** are available in 54", 60", 66", 72", 78" and 84" widths to suit nearly any application. All of this versatility and quality shows that **Berlon builds buckets the way they should be built!**

**Note:** When ordering any bucket, the dealer must specify the skidloader model that the bucket is to be used on.

Suggested List Price Pg 902-903

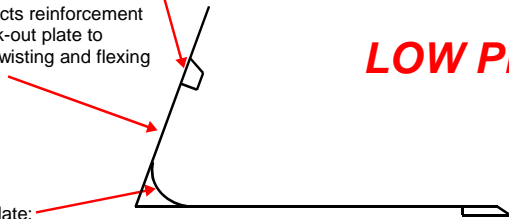
# Why a Berlon?



Reinforcement tube:

- Superior strength
- 90° on bottom for carrying product longer than the cutting edge (i.e. concrete slabs)

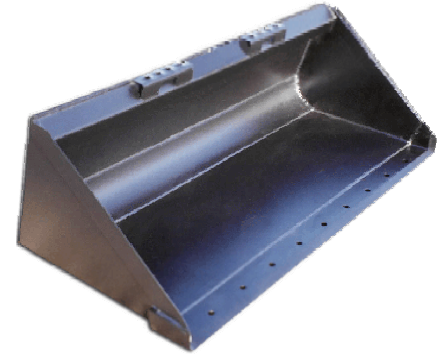
Mount connects reinforcement tube with kick-out plate to reduce any twisting and flexing



Kick-out plate:

- Assists in a cleaner bucket
- Acts as lower reinforcement

## LOW PROFILE BUCKET B-Series



### 14 MAIN REASONS:

### OPTIONS:

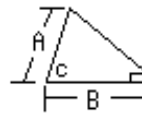
Pg 904

May not be available on all sizes.

- 13 different options to add to Berlon Buckets, making operators more efficient
- Different mounts to fit your skidloader
- 3/4" x 6" cutting edge with holes
- 3/4" edge wrapped 3" around the side of bucket, reinforcing corners
- Dimple plate which makes the bottom of the bucket 5 times stronger
- Radius kick-out plate inside back of bucket providing easy clean out
- Radius kick-out plate provides ultimate strength at bottom of mount
- Reinforcement tube assists in holding larger products from tipping out
- Reinforcement tube in line with top of mount
- Back of bucket has sharp edge for back dragging
- 3/8" x 3" material for side cutting edges
- Heavy duty steps
- Powder coat paint provides durable & professional finish
- No open crevices-welded 100% to keep moisture out

- Bag Buster
- Bolt On Cutting Edge
- Bolt On Tooth Bar
- Bolt On Tooth Bar Over Edge
- Bolt On Serrated Edge
- Rake Tooth Edge
- Side Walk Edge
- Grapple
- Scrap Ends
- Spill Guard
- Utility Extension
- Light Duty Weld on Teeth
- Heavy Duty Weld on Teeth

## Bucket Data



Part #	I.D. Width	O.D. Width	Back Height A	Depth B	Back Angle C	Weight	Heaped Capacity	Dimple Plate	1/2" x 3" Bars	Steps	Cutting Edge	Holes in Edge
B-54	54"	55.5"	21"	30"	70°	362.5	12.49 Cubic Ft	No	2	2	3/4" x 6"	Yes
B-60	60"	61.5"	21"	30"	70°	407.0	13.88 Cubic Ft	Yes	0	2	3/4" x 6"	Yes
B-66	66"	67.5"	21"	33"	70°	476.5	16.80 Cubic Ft	Yes	0	2	3/4" x 6"	Yes
B-72	72"	73.5"	21"	33"	70°	505.0	18.33 Cubic Ft	Yes	0	2	3/4" x 6"	Yes
B-78	78"	79.5"	21"	33"	70°	525.5	19.85 Cubic Ft	Yes	0	2	3/4" x 6"	Yes
B-84	84"	85.5"	21"	33"	70°	619.0	21.38 Cubic Ft	Yes	2	2	3/4" x 6"	Yes

Suggested List Price Pg 902-903